

# OM-PG3600-1E1

A trunk gateway aimed at small and medium enterprise.



## OM-PG3100-2E1

OM-PG3600-1E1 is a trunk gateway used to help enterprise to realize the evolution from the traditional PBX to voice IP .On the one hand,it supports PRI/SS7 protocol and adopts standard T1/E1 trunk inter face to realize docking with traditional PBX. On the other hand, it adopts standard SIP protocol docking with various soft switch to ensure PSTN seamless access to IP voice/NGN network ,and achieves VoIP/FoIP and more value-added service. OM-PG3600-1E1 supports intelligent multiple trunk routing technology ,makes the operator easy to manage trunk routing by price optimum rule,and the automatic switch-over between multiple trunk routing makes the network have high reliability.

### KEY BENEFITS

- The strong performance of hardware platform, energy efficiency concurrent processing
- Service oriented architecture, rich services, in addition to support voice and IP fax outside, still can be expanded to fax server
- Flexible dial-up rules and operation, in order to adapt to the different work scene.
- Voice codec: G.711A/U,G.723.1,G.729A/B, iLBC
- Good compatibility, support Asterisk, Elastix, Freeswitchand Small and medium IPPBX platform

## Voice & Fax

- G.711A/U law, G.723.1, G.729A/B, iLBC
- Silence Suppression & Detection
- Comfort Noise Generation (CNG)
- Voice Activity Detection (VAD)
- Echo Cancellation (G.168)
- Adaptive (Dynamic) Jitter Buffer
- Call Progress Tone Generation
- Programmable Gain Control
- T.38/Pass-through fax, up to 14.4kbps
- Modem
- RFC3407
- FAX/X-FAX
- QoS control: ToS, DS

## Call Feature

- DTMF : RFC2833, SIP INFO, INBAND
- Back tone/busy tone control
- Digit Map
- Dial rule configuration, max 2000 rules
- Overlap receiving
- Dial time control
- Time slot group management
- E1/T1 port group management

## Maintain & Upgrade

- Web based configuration
- HTTP/Telnet configuration
- Data backup/restore
- Support English and China language
- Firmware upgrade by TFTP
- Web & telnet login password modify
- SNMP management
- Syslog: Debug, Info, Error, Warning ,
- Notice
- CDR
- NTP Configuration

## Protocol & IP Feature

- SIP-RFC 3261, 3262, 3263, 3264, 3265, 3515, 2976, 3311
- SDP -RFC 2327
- RTP/RTCP-RFC2198, 1889
- SIP-T, RFC3372, RFC3204, RFC3398
- H.323, ITU-T H.323 V4
- SIP domain register
- IP group management
- Trunk priority management
- H.323
- Peer/Access work mode
- IP address/domain authentication
- SIP username/password register to remote

## Signal

- PRI/PRA
- ISDN E1/T1
- ITU-T I.431, Q.921, Q.931, ETSI Q.sig
- SS7/No.7
- ITU, ANSI, ETSI, ITU-China,
- MTP layer 1/2/3, ISUP/TUP
- R2
- Support China, Vietnam etc 23 country standard
- SS7 MTP link management
- SS7 circuit maintenance

## Routing & Num manipulation

- Routing rules PSTN-PSTN, PSTN-IP, IP-IP, IP-PSTN
- Intelligent routing
- Routing time control
- 256 routing rules
- Caller/callee manipulation
- 128 number manipulation

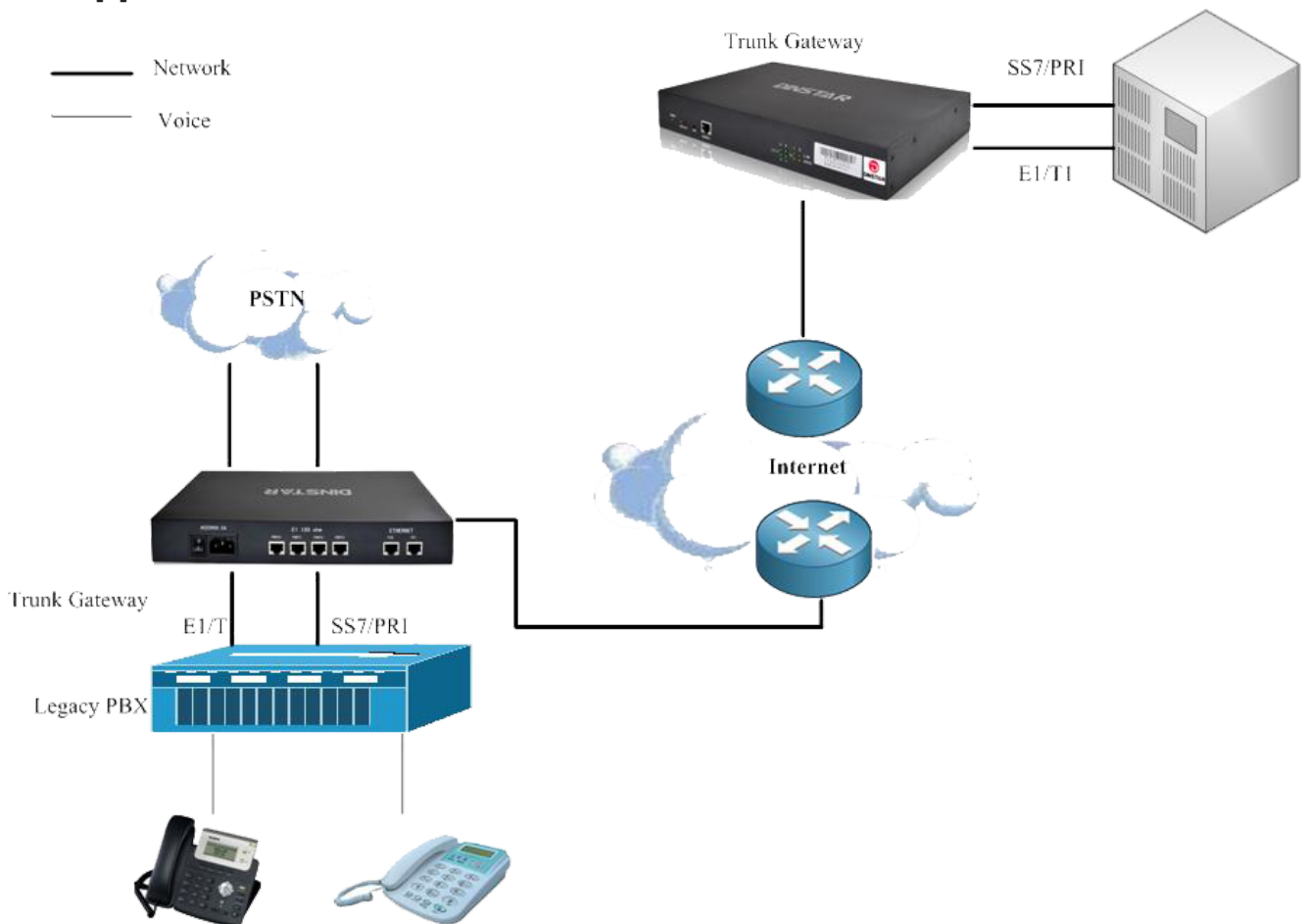
## Physical Properties

- Power supply: 110~220VAC,50-60Hz
- Power consumption: 10w
- Temperature(operation): 0 °C~ 45 °C  
(storage): -20 °C~80 °C
- Operation Humidity: 10%-90% no condensation
- Dimension(w/D/H): 300\*200\*44mm
- Weight: 1.29kg
- Color & material: black, iron box

## Certifications

- CE, FCC

## System Application



## Physical Interface

- Interfaces: 1/2/4\*E1/T1, G.703, 120ΩRJ-48
- Ethernet Interface:
  - FE0(WAN):service eth interface),
  - FE1(LAN):management eth interface)
  - \*10/100M Base-TxRJ45
- Management Interface:
  - 1 Console 115200bps

## Network Protocol

- IP,TCP, UDP,TFTP, FTP, RTP, RTCP, ARP/RARP,ICMP Ping, NTP, SNTP, HTTP, DNS